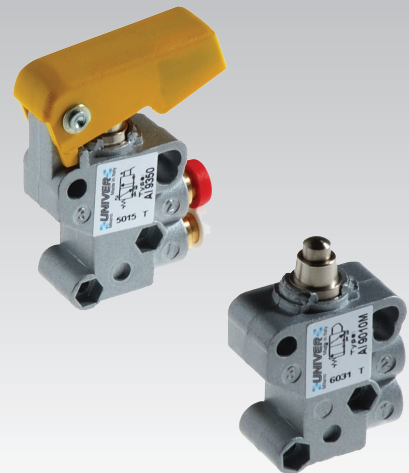


AI Valves

Jet Series - Miniature Manual Valves



TECHNICAL DATA

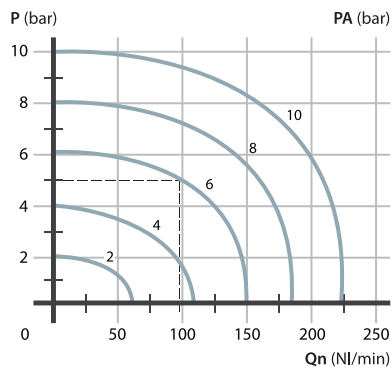
Ambient Temperature	-10 to +90 °C
Fluid Temperature	max +50 °C
Fluid	Filtered air 50 µm, with or without lubrication
Spool Mechanism	Poppet system
Valve Function	2/2 NC, 3/2 NC, 2/2 NO, 3/2 NO
Pressure	max 10 bar
Control	Manual, mechanical
Return	Mechanical spring
Connections	Threaded M5 or Ø4mm push-in fitting
Valve Orifice	2.5 mm Ø
Nominal Flow Rate (NI/min)	70 NI/min

CONSTRUCTION DATA

Valve Body	Zamak
Seals	Nitrile rubber
Spool	Nickel-plated brass

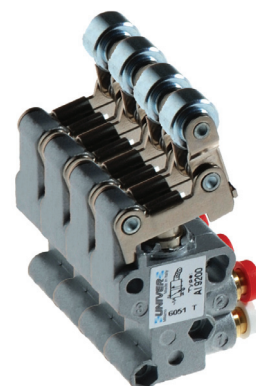
FLOW DATA

Flow rate characteristics

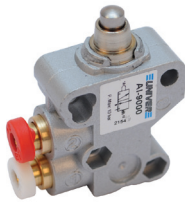


P = Working pressure
 PA = Supply pressure
 Qn = Flow rate

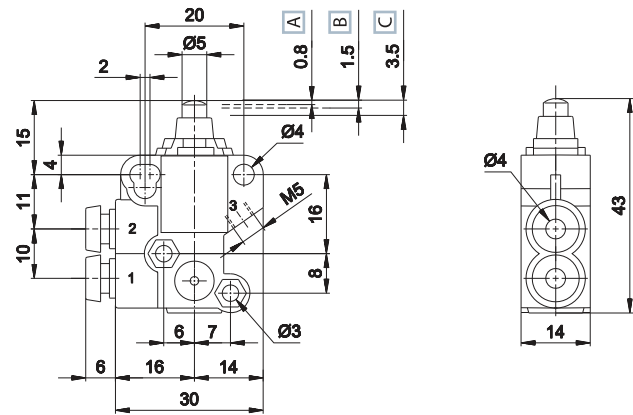
SPECIAL VERSIONS



TAPPET VALVES 4mm Push-In Fitting



	Symbol	Connection	Force (a) N	Weight Kg	Part no.
3/2 NC		tube Ø4	14	0,060	AI-9000
3/2 NO		tube Ø4	14	0,060	AI-9010
2/2 NC		tube Ø4	14	0,060	AI-9020
2/2 NO (b)		tube Ø4	14	0,060	AI-9030

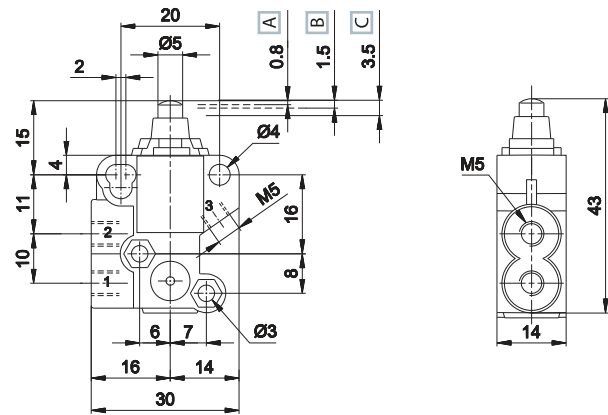


- A Pre-stroke
 - B Valve fully open
 - C Total stroke
- 1 = Supply port
 - 2 = Outlet
 - 3 = Exhaust

TAPPET VALVES M5

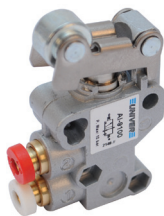


	Symbol	Connection	Force (a) N	Weight Kg	Part no.
3/2 NC		M5	14	0,060	AI-9000M
3/2 NO		M5	14	0,060	AI-9010M
2/2 NC		M5	14	0,060	AI-9020M
2/2 NO (b)		M5	14	0,060	AI-9030M

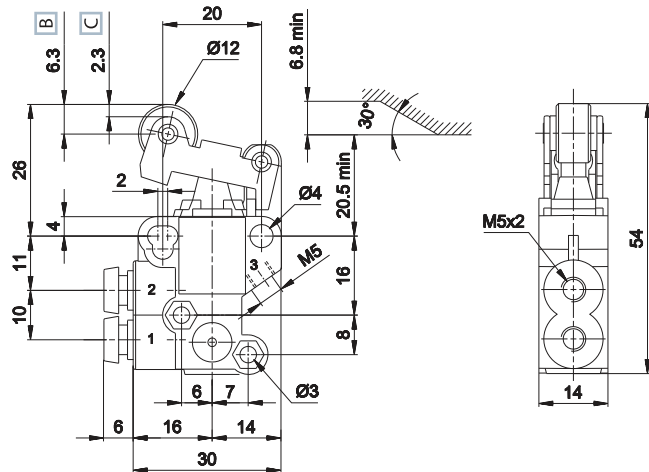


- A Pre-stroke
 - B Valve fully open
 - C Total stroke
- 1 = Supply port
 - 2 = Outlet
 - 3 = Exhaust

ROLLER TRIP VALVES 4mm Push-In Fitting



	Symbol	Connection	Force (a) N	Weight Kg	Part no.
3/2 NC		tube Ø4	7	0,085	AI-9100
3/2 NO		tube Ø4	7	0,085	AI-9110
2/2 NC		tube Ø4	7	0,085	AI-9120
2/2 NO (b)		tube Ø4	7	0,085	AI-9130

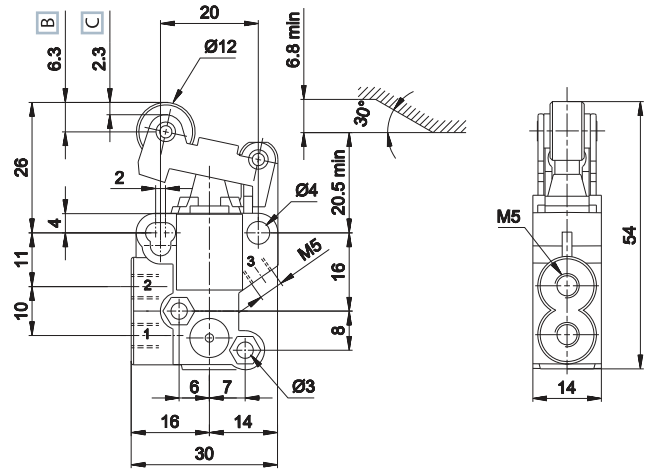


- B Total stroke
 - C Roller contact area
- 1 = Supply port
 - 2 = Outlet
 - 3 = Exhaust

(a) = at 6 bar (b) = upon request 2/2 NO version

ROLLER TRIP VALVES M5

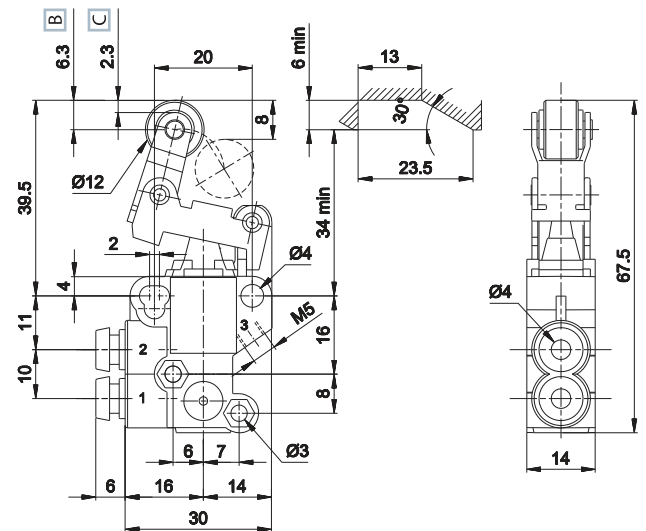

	Symbol	Connection	Force (a) N	Weight Kg	Part no.
3/2 NC		M5	7	0,085	AI-9100M
3/2 NO		M5	7	0,085	AI-9110M
2/2 NC		M5	7	0,085	AI-9120M
2/2 NO (b)		M5	7	0,085	AI-9130M



- B Total stroke
C Roller contact area
 1 = Supply port
 2 = Outlet
 3 = Exhaust

ONE-WAY ROLLER TRIP VALVES 4mm Push-In Fitting

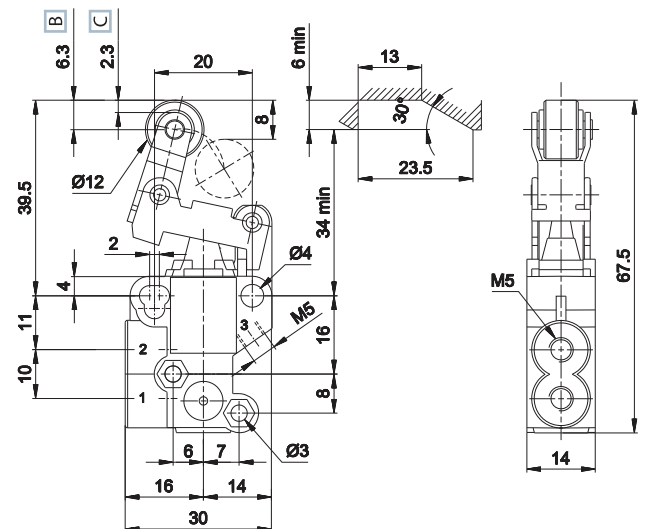

	Symbol	Connection	Force (a) N	Weight Kg	Part no.
3/2 NC		tube Ø4	4	0,085	AI-9200
3/2 NO		tube Ø4	4	0,085	AI-9210
2/2 NC		tube Ø4	4	0,085	AI-9220
2/2 NO (b)		tube Ø4	4	0,085	AI-9230



- B Total stroke
C Roller contact area
 1 = Supply port
 2 = Outlet
 3 = Exhaust

ONE-WAY ROLLER TRIP VALVES M5


	Symbol	Connection	Force (a) N	Weight Kg	Part no.
3/2 NC		M5	4	0,085	AI-9200M
3/2 NO		M5	4	0,085	AI-9210M
2/2 NC		M5	4	0,085	AI-9220M
2/2 NO (b)		M5	4	0,085	AI-9230M



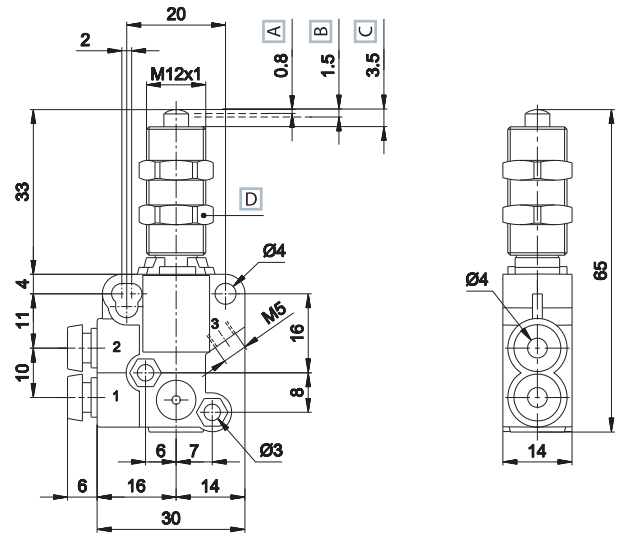
- B Total stroke
C Roller contact area
 1 = Supply port
 2 = Outlet
 3 = Exhaust

(a) = at 6 bar (b) = upon request 2/2 NO version

TAPPET VALVES 4mm Push-In Fitting
With built-in shock absorber



	Symbol	Connection	Force (a) N	Weight Kg	Part no.
3/2 NC		tube Ø4	14	0,082	AI-9300
3/2 NO		tube Ø4	14	0,082	AI-9310
2/2 NC		tube Ø4	14	0,082	AI-9320
2/2 NO (b)		tube Ø4	14	0,082	AI-9330

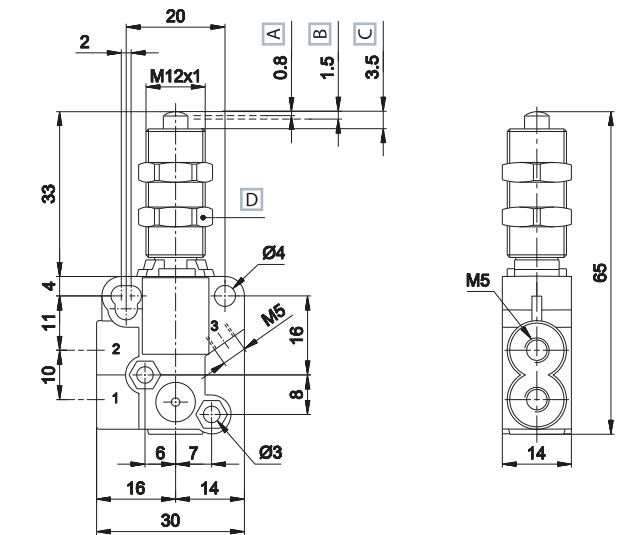


- A Pre-stroke
 - B Valve fully open
 - C Total stroke
 - D Wrench 14
- 1 = Supply port
 - 2 = Outlet
 - 3 = Exhaust

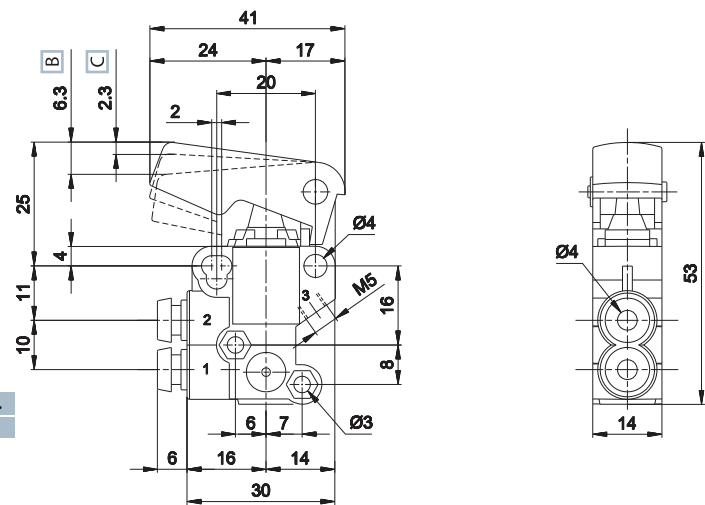
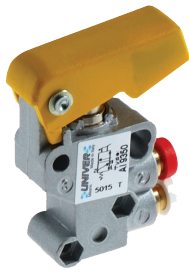
TAPPET VALVES M5 with built-in shock absorber



	Symbol	Connection	Force (a) N	Weight Kg	Part no.
3/2 NC		M5	14	0,082	AI-9300M
3/2 NO		M5	14	0,082	AI-9310M
2/2 NC		M5	14	0,082	AI-9320M
2/2 NO (b)		M5	14	0,082	AI-9330M



- A Pre-stroke
 - B Valve fully open
 - C Total stroke
 - D Wrench 14
- 1 = Supply port
 - 2 = Outlet
 - 3 = Exhaust

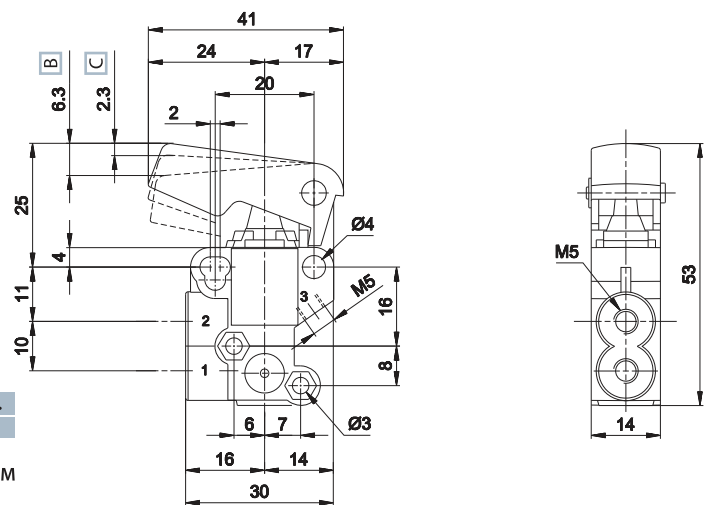
PALM VALVES 4mm Push-In Fitting


	Symbol	Connection	Force (a) N	Weight Kg	Part no.
3/2 NC		tube Ø4	7	0,065	AI-9350
3/2 NO		tube Ø4	7	0,065	AI-9360
2/2 NC		tube Ø4	7	0,065	AI-9370
2/2 NO (b)		tube Ø4	7	0,065	AI-9380

Button yellow colour

B Total stroke
C Valve fully open

1 = Supply port
 2 = Outlet
 3 = Exhaust

PALM VALVES M5


	Symbol	Connection	Force (a) N	Weight Kg	Part no.
3/2 NC		M5	7	0,065	AI-9350M
3/2 NO		M5	7	0,065	AI-9360M
2/2 NC		M5	7	0,065	AI-9370M
2/2 NO (b)		M5	7	0,065	AI-9380M

Button yellow colour

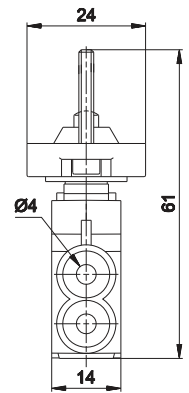
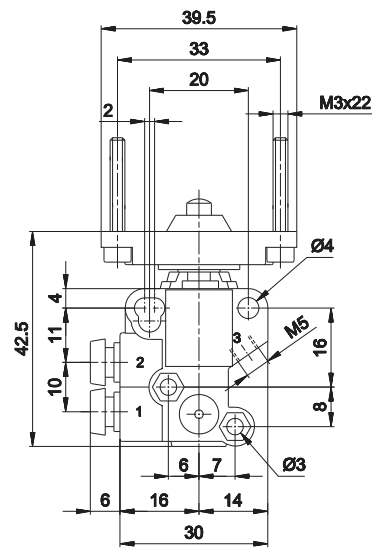
B Total stroke
C Valve fully open

1 = Supply port
 2 = Outlet
 3 = Exhaust

PANEL MOUNT VALVES 4mm Push-In Fitting



	Symbol	Connection	Force (a) N	Weight Kg	Part no.
3/2 NC		tube Ø4	14	0,075	AI-9400
3/2 NO		tube Ø4	14	0,075	AI-9410
2/2 NC		tube Ø4	14	0,075	AI-9420
2/2 NO (b)		tube Ø4	14	0,075	AI-9430

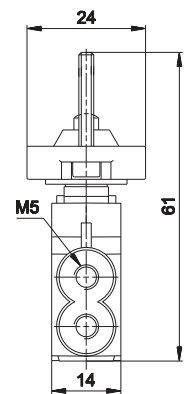
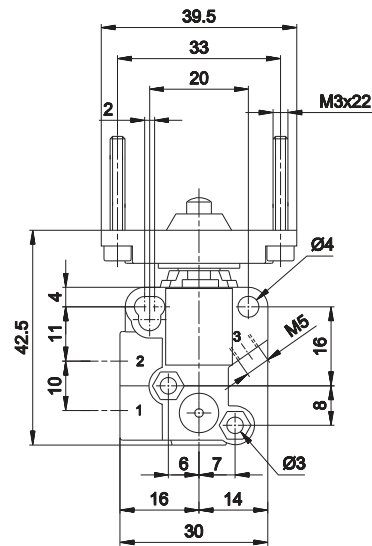


1 = Supply port
2 = Outlet
3 = Exhaust

PANEL MOUNT VALVES M5



	Symbol	Connection	Force (a) N	Weight Kg	Part no.
3/2 NC		M5	14	0,075	AI-9400M
3/2 NO		M5	14	0,075	AI-9410M
2/2 NC		M5	14	0,075	AI-9420M
2/2 NO (b)		M5	14	0,075	AI-9430M



1 = Supply port
2 = Outlet
3 = Exhaust

MANUAL ACTUATORS

	Recessed button	<ul style="list-style-type: none"> BLACK AI-3511Q RED AI-3512Q GREEN AI-3513Q 		Rotating lever selector	<ul style="list-style-type: none"> BLACK AI-3522Q BLACK AI-3523Q
	Head button	<ul style="list-style-type: none"> RED AI-3514Q BLACK AI-3516Q RED AI-3514QD BLACK AI-3516QD 		Lever operator	<ul style="list-style-type: none"> BLACK AI-3524Q
	Button	<ul style="list-style-type: none"> GREEN AI-3515Q RED AI-3517Q BLACK AI-3519Q 		Omni-directional operator	<ul style="list-style-type: none"> BLACK AI-3525Q
	Rotating selector	<ul style="list-style-type: none"> BLACK AI-3520Q BLACK AI-3521Q 		Push-pull operator	<ul style="list-style-type: none"> BLACK AI-3526Q

(a) = at 6 bar (b) = upon request 2/2 NO version
For actuator dimensions refer to section "Accessories>Actuators"